



*A Public Agency*

*Beach Cities*  
***Health District***

# Healthy Living Campus Project Overview

# Project Overview

*Built in 1955*



Modernize existing building & campus

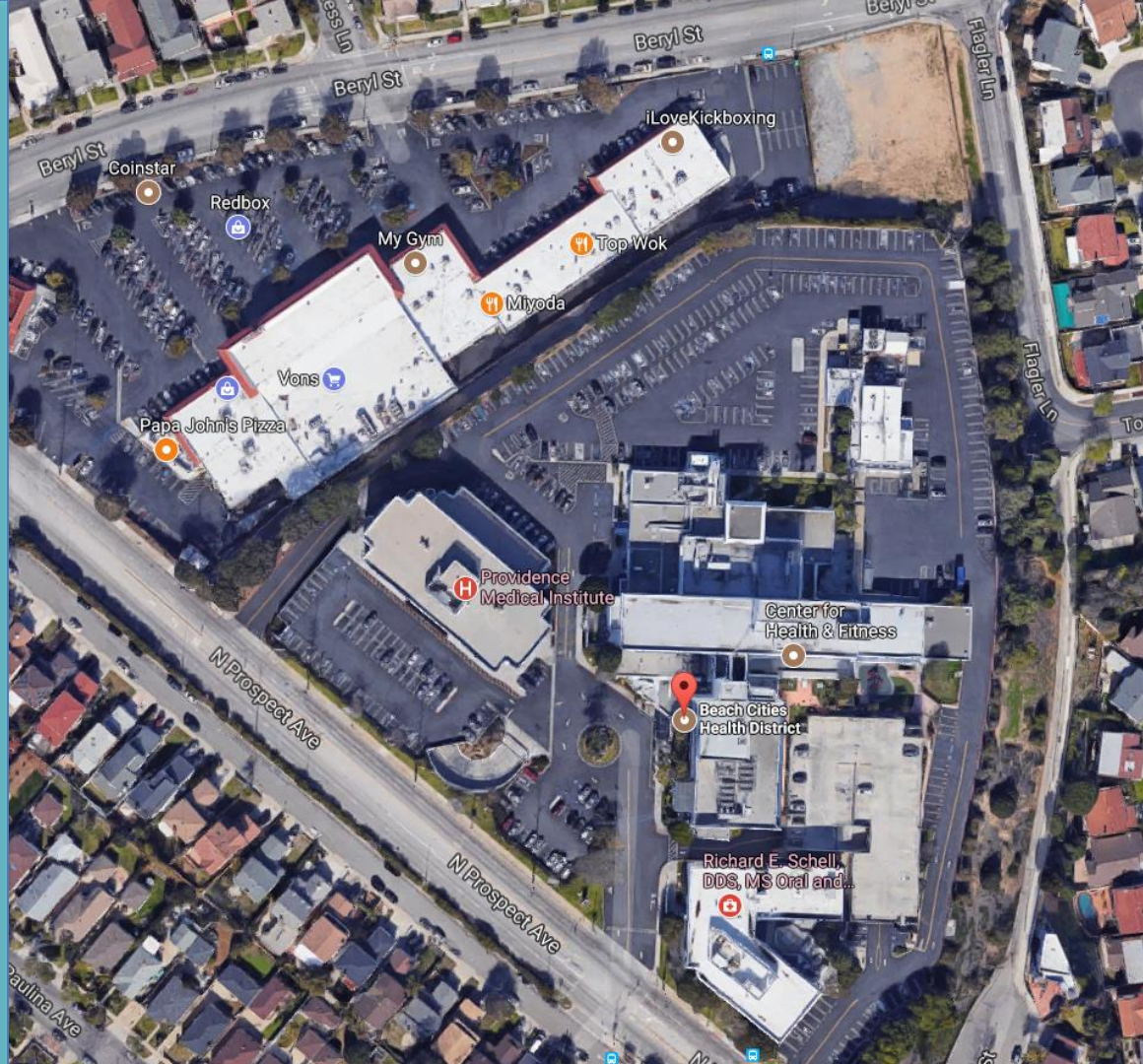


Develop residential options for older adults



Healthy Living Campus

# Current Campus: Parking Sprawl & Unused Space

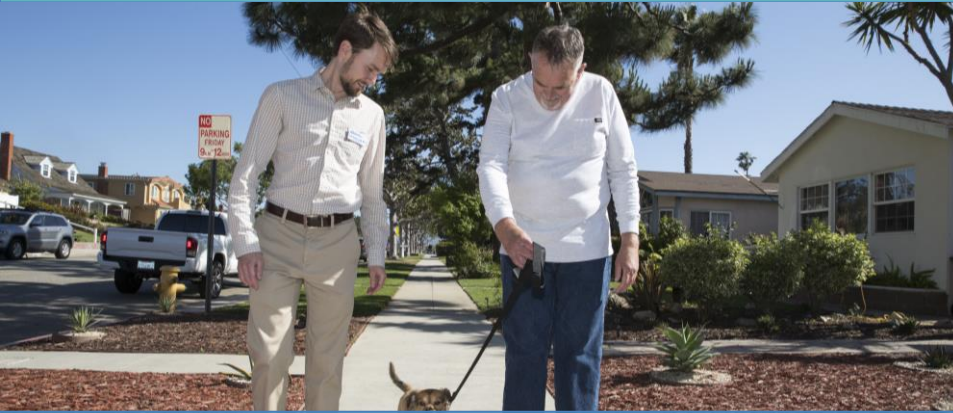


# Conceptual Site Plan:

- Green space
- Walking paths/bike paths
- Outdoor meeting space
- Community gardens
- CA native plant-scaping
- Protected bike path
- Outdoor fitness spaces
- Warm water exercise pool
- Medical exercise center
- Bicycle parking
- Community for older adults
- Intergenerational programming



# Community Benefits



Quality of life



Community connection



Comprehensive care services



Environmental sustainability

# Key Features



**Green Space & Gardens**



**Bike and pedestrian paths**



**Medical exercise center**



**Upgraded facilities**

# Community for Older Adults



**Meeting the need for local senior housing**



**Opportunities for social connection**



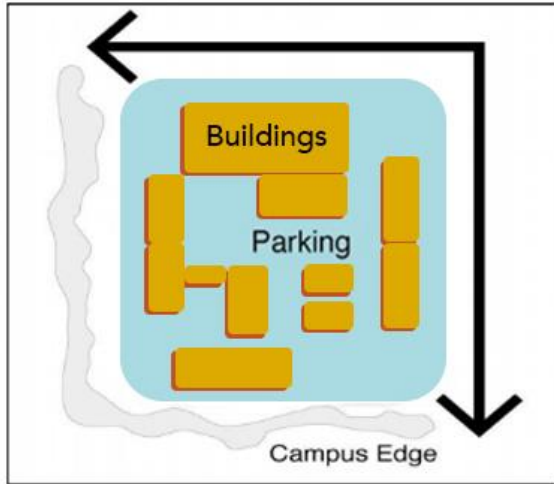
**Access to health care services**



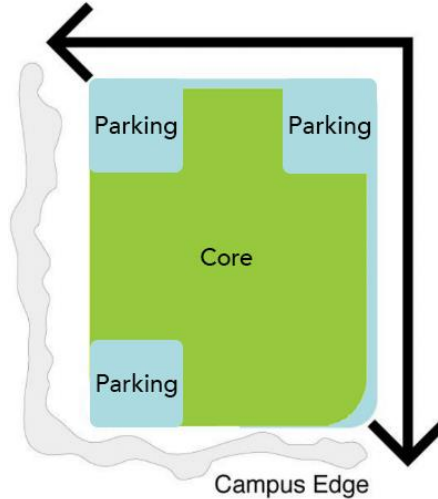
**Intergenerational Programming**

# Campus Concept

**EXISTING**



**PROPOSED**



- Safer for pedestrians
- Improves campus traffic
- Allows for usable green spaces



# Regulatory Framework

## Project is subject to regulations from:

- BCHD Board
- City of Redondo Beach
- California Environmental Quality Act
- Hermosa Beach, Manhattan Beach and Redondo Beach Taxpayers
- Other local, county and state entities

# Proposed Project Timeline



*\*The schedule is based on several factors and is subject to many changes.*

# Sign-Up for Project Updates

[HLInfo@bchd.org](mailto:HLInfo@bchd.org)

[bchd.org/HealthyLivingCampus](http://bchd.org/HealthyLivingCampus)

(or visit the Comment Station)