



A Public Agency

Beach Cities
Health District

Healthy Living Campus Project Community Input & Outreach

Community Outreach: By the Numbers

12 community presentations

7 presentations to electeds

5 working group meetings

4 sub-group meetings

3 public study sessions

2 community meetings

1 open house



34 community outreach
meetings, presentations total

Community Outreach: By the Numbers

65k annual reports

65k LiveWell magazines

2,900 postcards/flyers

115 public comment cards

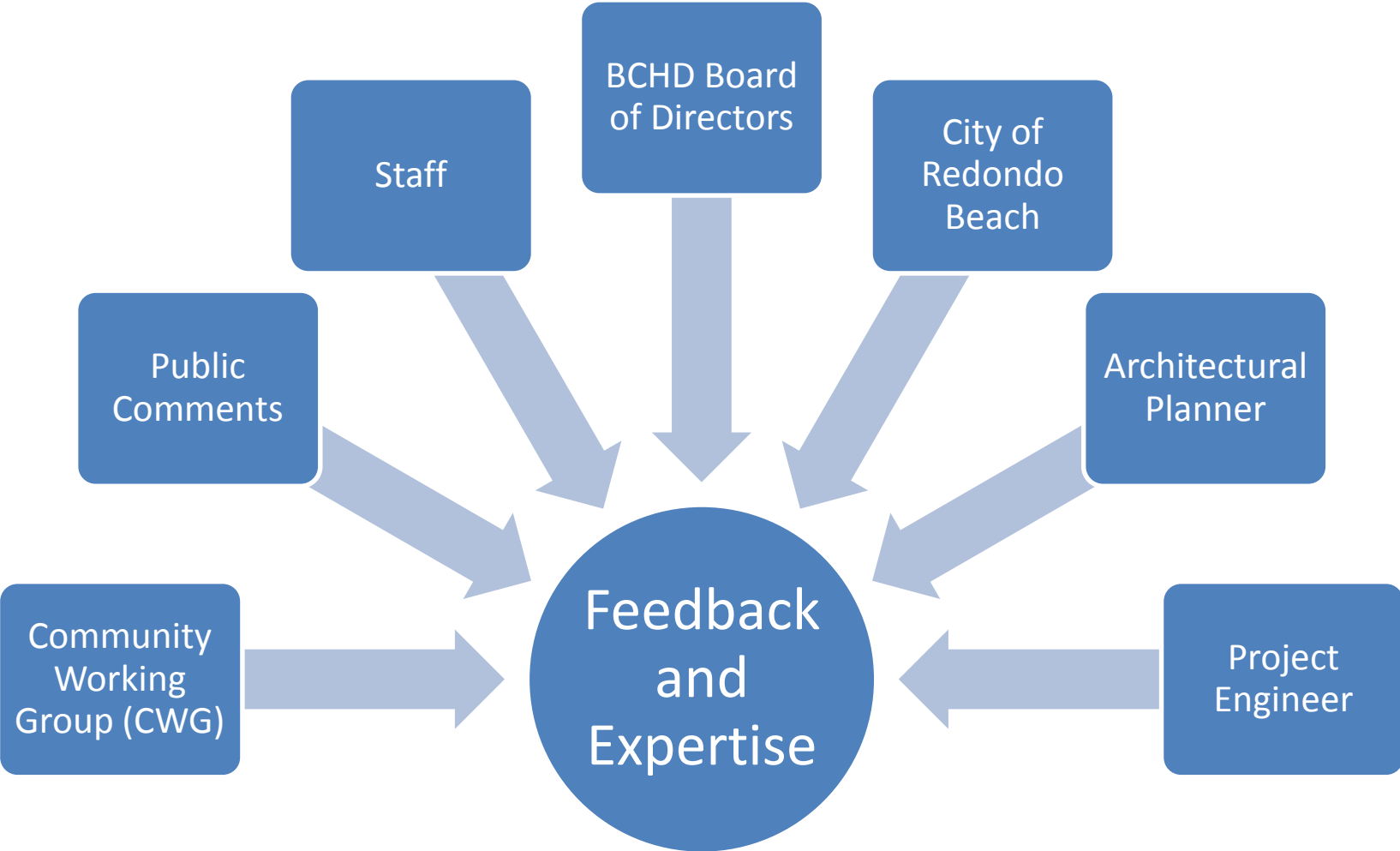
11 news articles

10 e-blasts to 92,455 emails

9 board reports submitted



Healthy Living Campus Project



Community Working Group Members

Redondo Beach

- Pat Aust
- Pat Dreizler
- Patrick Flannery
- Laurie Glover
- Darryl Kim
- Jim Light
- Jean Lucio
- Mark Nelson
- Jacqueline Folkert
- Justin Pioletti
- Cindy Schaben
- Pete Vlahakis

Hermosa Beach

- Dency Nelson
- George Schmeltzer
- Kambria Vint

Manhattan Beach

- Sue Allard
- Joanne Sturges
- Jan Buike
- Craig Cadwallader
- Walt Dougher

Torrance

- Bruce Steele



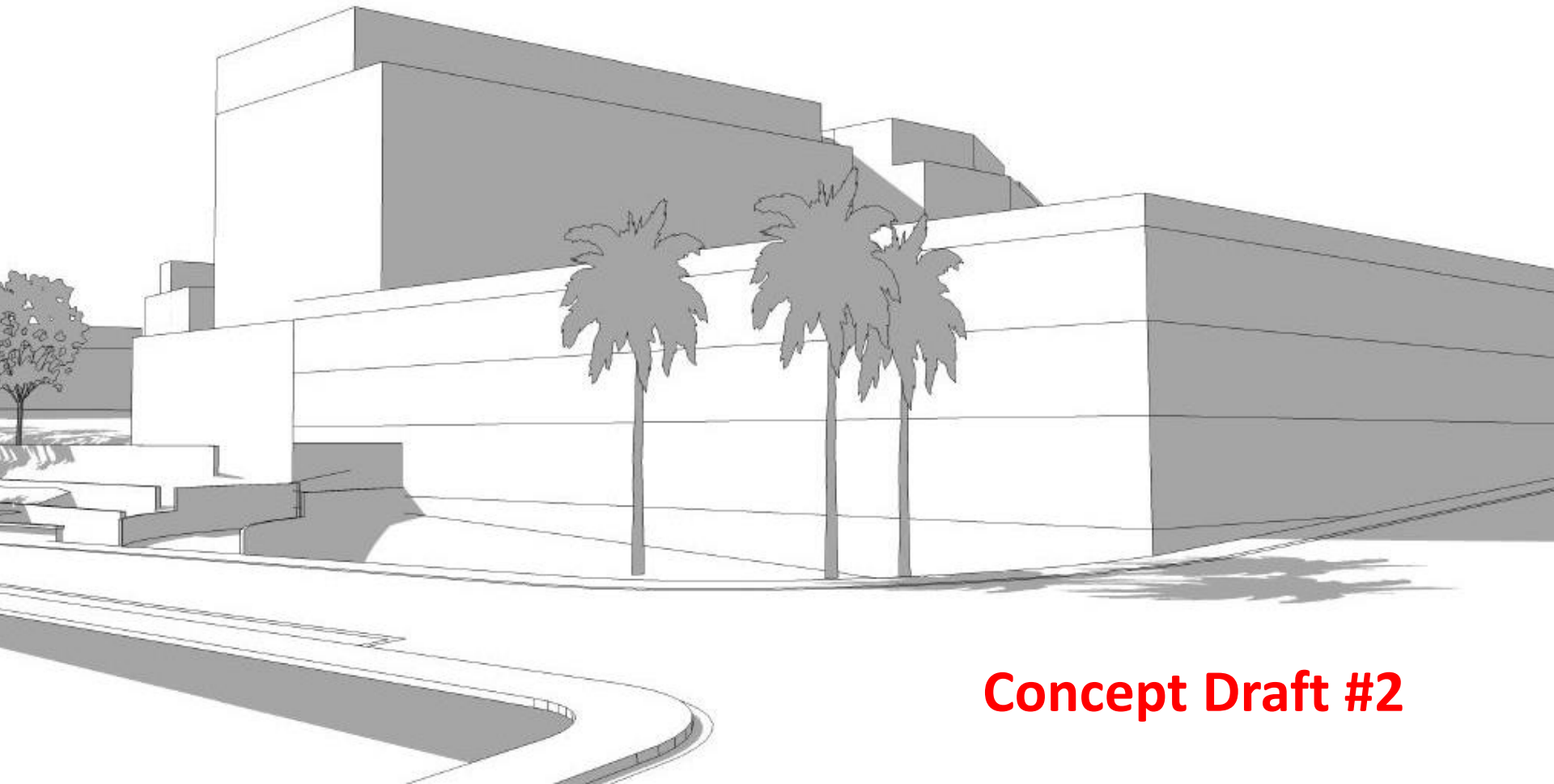
Refinements Based on Community Input

- Re-designing building on Flagler & Beryl
- Re-designed Prospect entrance
- Re-configured green space
- Proposed Center for Health & Fitness at Flagler & Beryl
- Included warm water pool in new CHF
- Plaza-level CHF entrance
- Protected bike path connecting Flagler and Diamond streets
- Native Plant-scaping



Plan Refinements

- Lowered proposed building height on Flagler/Beryl lot by 3 levels and added subterranean parking



Concept Draft #2

Plan Refinements

- Added protected bike lane connecting Flagler & Diamond streets



Plan Refinements

- Changed building orientation to create larger green space & garden area



Plan Refinements

- Incorporated larger multi-use community green space



Plan Refinements

- Incorporated Calif. native gardens onsite



Sign-Up for Project Updates

HLInfo@bchd.org

bchd.org/HealthyLivingCampus
(or visit the Comment Station)